

# EARLY HEARING DETECTION & INTERVENTION

## NEWBORN HEARING SCREENING

The goal of newborn hearing screening is to identify children who are deaf or hard of hearing (d/hh) so that they have access to hearing technology and early intervention at a young age. Early access to communication and intervention are important for developing children's social and academic potential.



### Referrals: Where to refer patients for pediatric audiology follow up

#### Eastern Nebraska:

##### Lincoln:

- **Barkley Speech-Language and Hearing Clinic**  
402-472-2071
- **ENT Specialties**  
402-488-5600

##### Omaha:

- **Boys Town National Research Hospital**  
402-498-6520
- **Children's Hospital and Medical Center**  
402-955-6799 opt 2

#### Central & Western Nebraska:

##### Grand Island

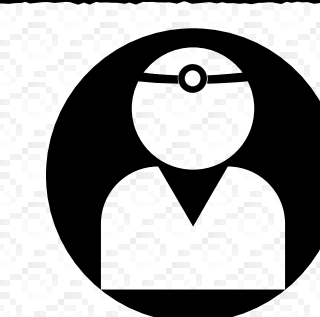
- **The Hearing Clinic**  
308-384-2101

##### Kearney

- **ENT Physicians of Kearney**  
308-865-2277

#### Teleaudiology available in five locations:

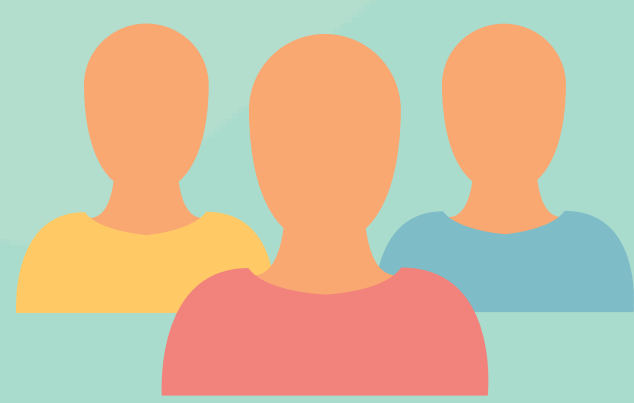
Contact Barkley Clinic - 402-472-2071  
Scottsbluff - Chadron - Sidney  
OgallalaNorth Platte



### Primary Care Provider's Role

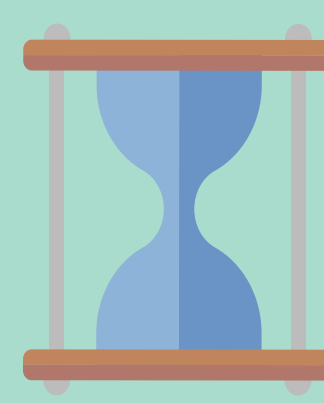
- Be familiar with the JCIH 1-3-6 goals.
- Update EHDI about a child's hearing status.
- Ensure timely and appropriate follow up occurs.
- Provide ongoing monitoring of every child's hearing status, especially those with risk factors.
- Work with the audiologist to coordinate the evaluation and referral process.

## Visit our website to find out about:



### Resources

Find reliable resources for services related to audiology evaluations, family support, early intervention and relevant research topics.



### Timely Follow-up

Find out why timely follow-up is important for infants who do not pass their newborn hearing screening.



### Next Steps

Algorithms to determine next steps when a baby does not pass the newborn hearing screening.



### Ongoing Monitoring

Understand and identify risk factors for late onset hearing loss, and when ongoing monitoring is needed.



### Family Support

Learn the benefits of connecting families of d/hh children, and where parents can find support.



### Reporting & Referrals

Find out how to report results to EHDI, and when to make a referral to Early Development Network (EDN).

For more information visit:



<http://dhhs.ne.gov/EHDI>

Nebraska Early Hearing Detection & Intervention

888-545-0935

[DHHS.NEEHDI@nebraska.gov](mailto:DHHS.NEEHDI@nebraska.gov)

NEBRASKA

Good Life. Great Mission.

DEPT. OF HEALTH AND HUMAN SERVICES